



National Programme Strategy

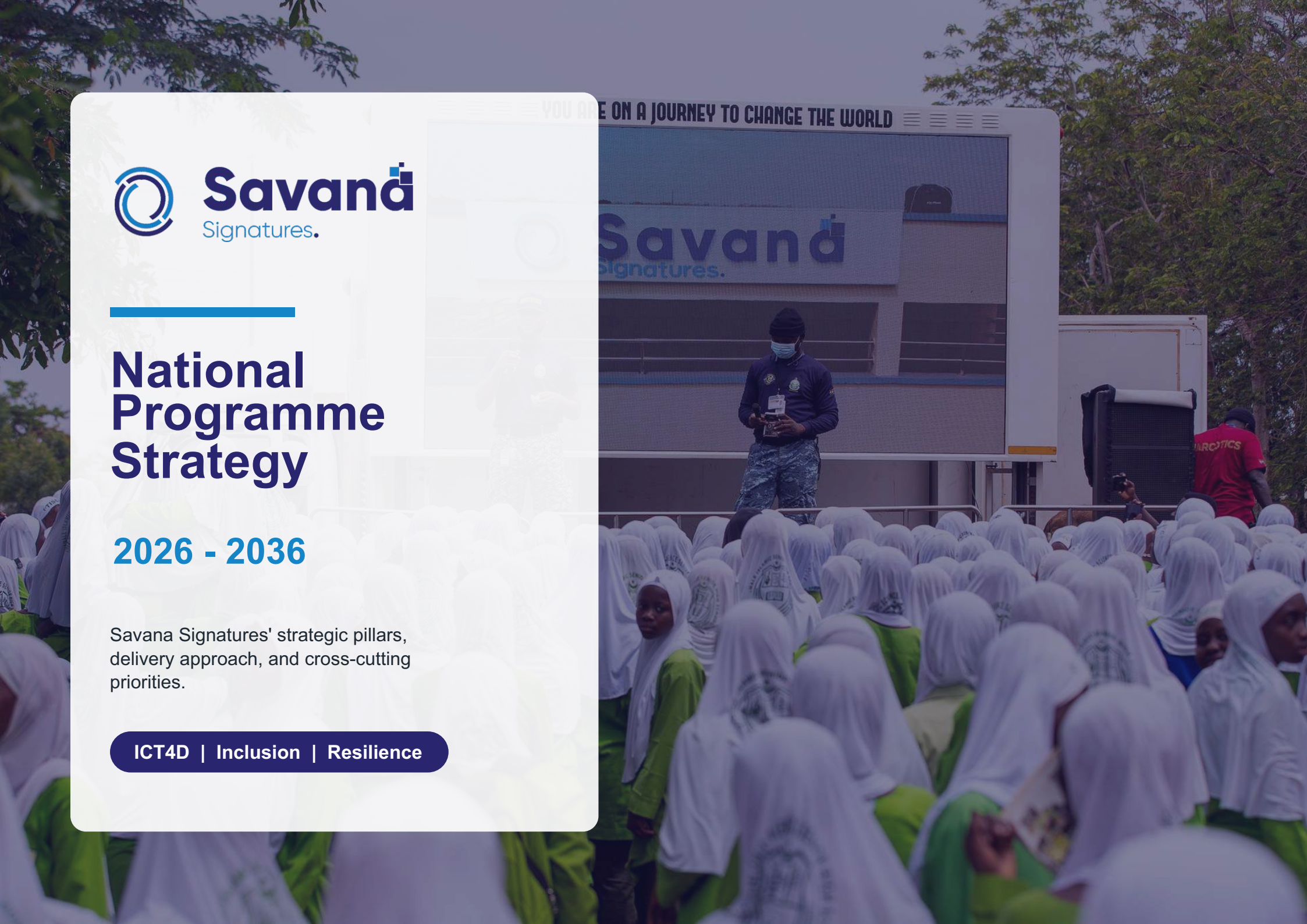
2026 - 2036

Savana Signatures' strategic pillars, delivery approach, and cross-cutting priorities.

ICT4D | Inclusion | Resilience

YOU ARE ON A JOURNEY TO CHANGE THE WORLD

Savana Signatures.



Reading Map

01

Strategic Frame

Purpose, programme architecture and Theory of Change

02

Pillar One

Human Capital Development: Health and Education

03

Pillar Two

Sustainable Environmental Management and Resilience:
Livelihood & Economic Empowerment and Climate Change
Adaptation & Environmental Education

04

Pillar Three

Social Inclusion and Cohesion

05

Enablers

Technology, cross-cutting lenses, partnerships and
management for change



STRATEGIC FRAME

The Change We Seek

Consolidating community well-being, socio-economic empowerment and resilience.

This will be pursued through ICT-enabled integrated interventions in health, education, livelihood development, environmental resilience, social inclusion and cohesion.

How the change will be achieved - Partnership with:



Government



Communities



Private sector



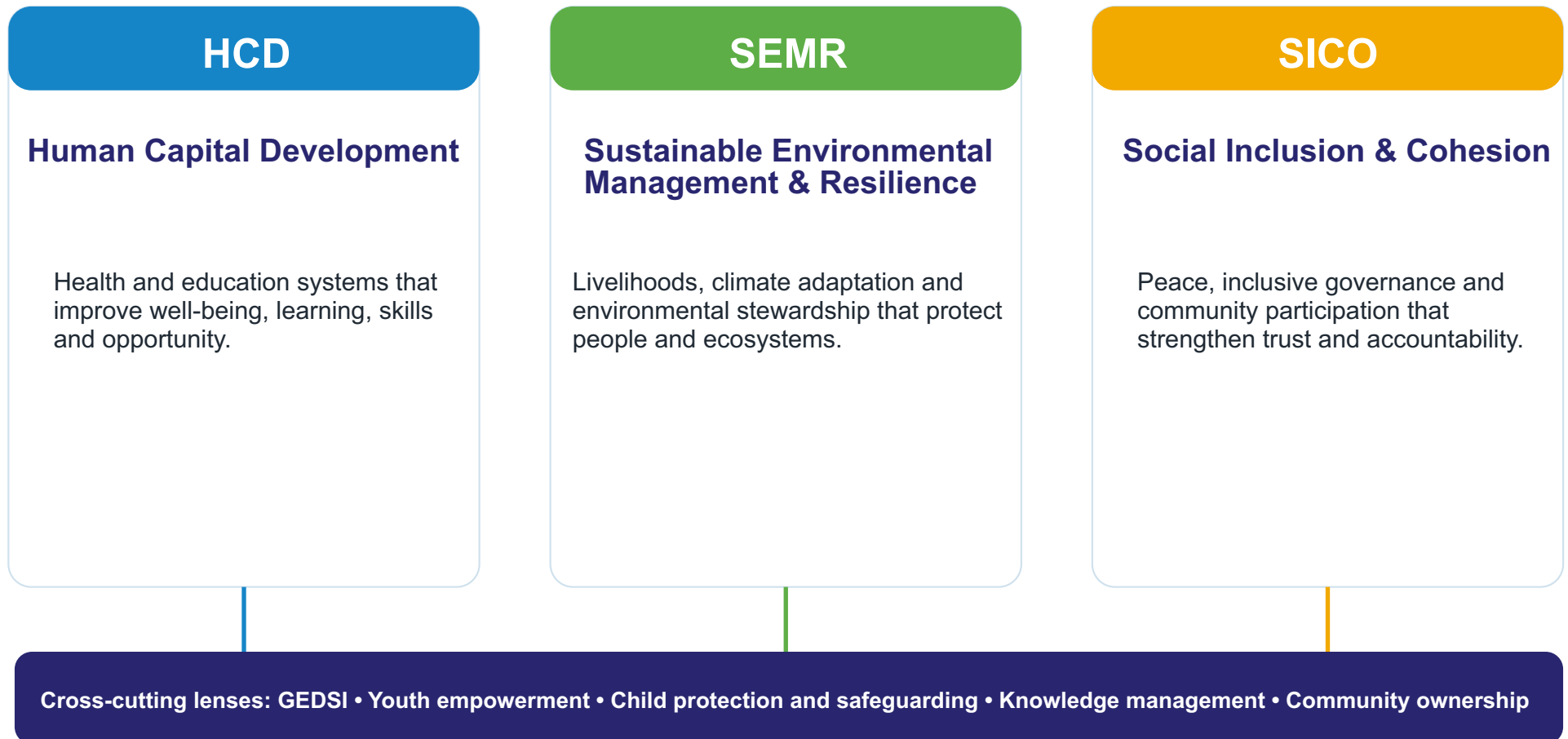
Civil society



Donors

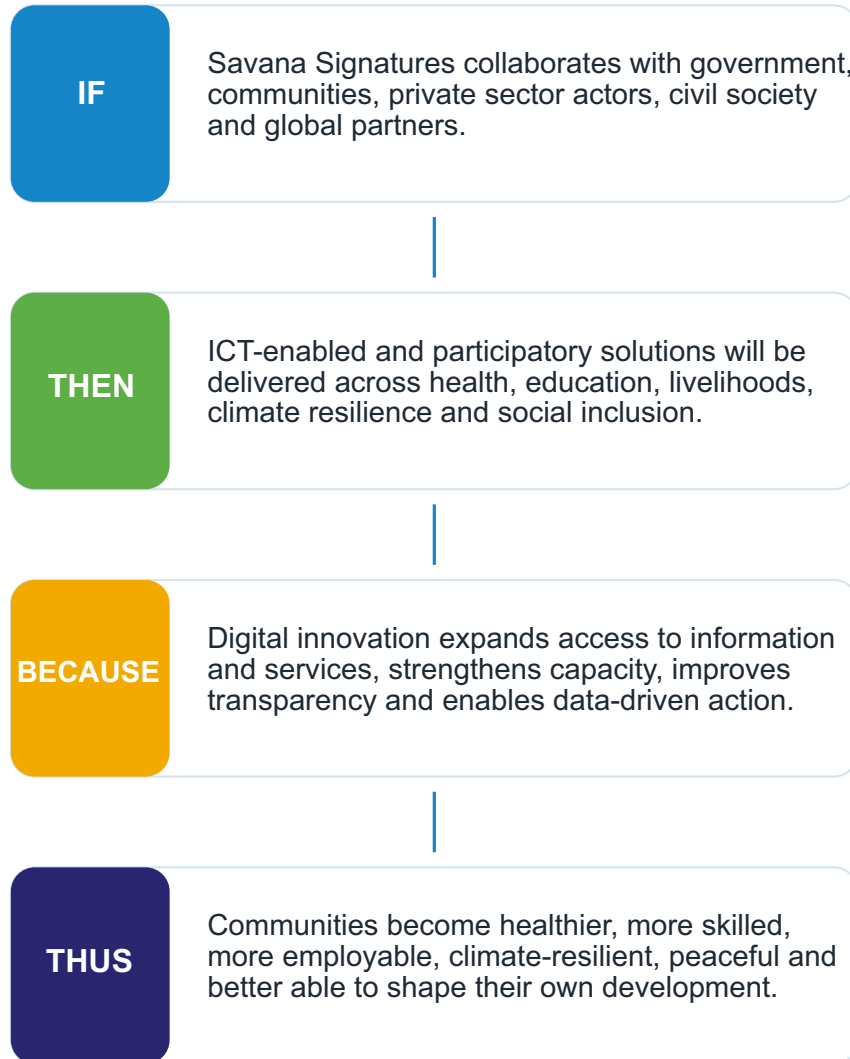
Three Pillars. One Digital Core.

The programme model is structured around three strategic pillars, enabled by technology, innovation, training, evidence and partnerships.



From Collaboration to Resilient Communities

The programme logic shows how ICT-enabled solutions improve access to information, strengthen service delivery, promote accountability and support positive behaviour change.



Programme pillars



PILLAR 01

Human Capital Development

Enhancing human development and overall well-being through quality health services, quality education, healthy lifestyles and equitable learning and health outcomes, especially for vulnerable and marginalized populations.

MENSTRUAL HYGIENE DAY 2025



Savand
Signatures.



Ghana Education Service (GES)



Ghana Health Services



SHE+



Hypocrite Consult

059 394 7812

059 394 7812

WhatsApp Only



Education Information
Non-judgmental
SRHR
Social Issues
Referral
Protection
059 394 7812

Health Sector Focus

Savana Signatures will continue to promote preventive health, strengthen health systems and advance inclusive, ICT-enabled access to quality care.



1

Strengthen health systems

Digital literacy, e-health training, telemedicine, mobile health data systems and online Continuing Professional Development.

2

Improve preventive care

Digital health campaigns, SMS and Voice reminders, community tracking tools and behaviour change communication.

3

Promote SRH, maternal and child health

Confidential mHealth information, Counselling, referral systems, ANC and PNC care and service utilisation.

4

Strengthen mental health and wellbeing

Stigma reduction campaigns, tele-counselling, screening and referral tools, psychological first aid.

5

Improve WASH access

Smart monitoring, hygiene messages, solar-powered purification, access to safe drinking water, technology in WASH

Education and Skills Development

The education strategy improves learning outcomes and expands skills-based opportunities for youth, women and vulnerable groups through ICT-enabled approaches.

Quality and Outcomes of Learning

- Foundational literacy and numeracy
- Digital learning tools and platforms
- Learner-centred and ICT-integrated pedagogy

Inclusive and Skills-Based Education

- TVET access for youth, women and vulnerable groups
- Industry partnerships
- ICT and digital skills for employability

Education Systems and Governance

- Professional development for teachers and leaders
- EMIS
- Coordination and accountability mechanisms





Savandá
Signatures.

PILLAR 02

Sustainable Environmental Management & Resilience

Promoting sustainable environmental management and resilience by strengthening community awareness, resource conservation, climate adaptation, alternative livelihoods and eco-friendly digital practices.



Savandá
Signatures.

Livelihood and Economic Empowerment

The livelihood strategy strengthens inclusive and sustainable income pathways through technology, agriculture, digital advisory services, finance, markets and environmentally responsible practices.



Agricultural productivity and resource management

- Climate-smart farming
- Access to microfinance and credit
- Farmer cooperatives and producer associations

Sustainable agri-business growth

- Beekeeping, aquaculture and agroforestry
- Green technologies and circular economy
- Eco-tourism and conservation enterprises

Income diversification through innovation

- Digital literacy and entrepreneurship
- Digital marketing and e-commerce
- Value-chain management tools

Climate Change Adaptation & Environmental Education

The climate change strategy improves environmental literacy, promotes renewable energy and strengthens preparedness for climate-related shocks.

Eco-friendly practices

Tree planting, restoration, waste reduction, local environmental committees and clean cooking.

Renewable energy adoption

Awareness campaigns, solar lighting, biogas, clean cookstoves and policy incentives.

Climate-induced disease prevention

WASH, health education, surveillance and rapid response on climate-sensitive diseases.

Community resilience

Disaster committees, early warning systems, local planning and nature-based solutions.





PILLAR 03

Social Inclusion & Cohesion

Empowering marginalized groups, fostering participatory community engagement and strengthening mechanisms that promote equity, tolerance and peaceful coexistence.

Peace, Governance and Community Networks

Savana Signatures will advance inclusion by identifying conflict-prone areas, promoting early warning, supporting dialogue and encouraging inclusive decision-making.



Peaceful coexistence and social harmony

- Youth influencers on radio and other digital platforms
- Intergenerational dialogue forums
- Cultural storytelling campaigns

Inclusive governance and participation

- SMS and app-based digital feedback systems
- Community scorecards and dashboards
- Youth policy dialogues

Community networks for peace and security

- ICT-enabled resource mapping
- Inter-organizational forums
- Trust-building campaigns

Technology, Innovation and Training

This pillar strengthens inclusive development outcomes by designing, applying and scaling context-appropriate digital, ICT4D and responsible AI solutions.



1 Research and foresight
Evidence on digital and AI trends for programme design.

2 Product development
User research, prototyping, piloting and scale readiness.

3 Responsible AI governance
Ethics, privacy, safeguarding, inclusion and human oversight.

4 Training services
Digital literacy, ICT4D, AI, data use and safeguarding curricula.

5 Digital mainstreaming
Digital workflows, dashboards, feedback tools and automation.

6 Ecosystem partnerships
Telecoms, universities, hubs, startups and government institutions.

7 Technology investment
Funding pipelines for innovation and transformation.

8 Data for scale
Dashboards, visualisation, interpretation and learning for policy influence.

9 Advisory support
Paid training, tool deployment and technical accompaniment.

10 Public learning platforms
ICT4D forums, webinars, dialogues and knowledge products.

What Every Programme Must Carry

These lenses ensure that all interventions are inclusive, safe, youth-responsive, evidence-driven and owned by communities.



Implication: Every proposal, activity plan, MEARL framework and communication product should explicitly show these lenses.

GEDSI

Inclusive and respectful environments for women, girls, persons with disabilities and marginalized groups.

Youth Empowerment

Meaningful participation, leadership, digital skills, entrepreneurship and movement building.

Child Protection

Safeguarding systems, safe reporting, risk management and capacity-building for stakeholders.

Technology & Innovation

Appropriate digital tools and tailored ICT interventions across the full project cycle.

Knowledge Management

Evidence-based programming, documentation, policy engagement and impact storytelling.

Community Ownership

Dialogue, change agents, participatory monitoring and locally led behaviour change.

Partnership, Synergy and Fundability

This programme strategy is a delivery guide and a fundraising instrument. It positions Savana Signatures as a credible ICT4D implementation and learning partner.

Partnership principles

Equality

Mutual respect

Ownership

Joint responsibility

Accountability

Internal synergy

Programme sub-teams collaborate intentionally so that one plus one equals three: stronger, holistic and scalable development results.

External synergy

Strategic networks and alliances with like-minded organizations amplify reach, learning, efficiency and sustainability.



Systems That Make the Strategy Work

Effective implementation requires a shift in operational practices, staff capacities, evidence use and financial sustainability.



Results orientation

Clearly defined indicators across quantitative and qualitative dimensions of change.

Monitoring and evaluation

Joint programme and MEARL planning from inception through closure.

Learning and knowledge management

Document, store and disseminate insights for participants, partners, donors and the public.

Human resource development

Realign mindsets and practices toward dynamic, participatory and evidence-driven approaches.

Fundraising direction

Domestic CSR, government-financed policy initiatives, embassies, international calls and collaborative proposals.

Planning for Delivery Conditions

The programme requires realistic assumptions and mitigation actions across technical, social, economic, environmental and political risks.

Health

Health workers adopt digital technologies; communities have mobile network access; government supports digital health.

Education

Schools have basic ICT infrastructure; teachers adopt new methods; students access digital devices.

Economic empowerment

Farmers adopt new technologies; local products have market demand; finance providers support agricultural credit.

Environmental resilience

Communities recognize climate risks; local governments support environmental initiatives; green funding is available.

SICO

Community leaders support peace initiatives; youth participate in positive change; platforms are accessible.

Risk mitigation

-  **Technical** Partner with telecom companies, provide basic devices and access opportunities.
-  **Social** Engage traditional leaders, use local languages.
-  **Economic** Diversify funding, build income-generating activities.
-  **Environmental** Promote adaptive strategies and resilience mechanisms.
-  **Political** Engage multiple stakeholders, build broad support and document best practices.

A Compact Results View

Success will be judged not only by project delivery, but by whether communities and systems become more resilient, inclusive and able to use evidence and technology for sustained change.

Access

More people access quality health, education, livelihood and governance information through inclusive digital channels.

Evidence

Dashboards, learning papers, case studies and data visualisations inform programming and policy engagement.

Capability

Staff, partners, institutions and communities gain practical ICT4D, data and responsible AI skills.

Ownership

Communities co-design, monitor and sustain interventions through change agents, feedback systems and local structures.

Sustainability

Diverse funding and service lines reduce donor dependency and support continuity of impact.



Inclusive. Healthy. Empowered. Resilient.

A programme architecture for ICT-enabled integrated development in Ghana.

Savana Signatures' National Programme Strategy 2026-2036

